



# ALBUQUERQUE VAULT COMPANY

PRE-CAST  
CONCRETE  
PRODUCTS

300 Airport Dr., NW \* Albuquerque, NM 87121 \* Phone: 505-836-4404 / Fax: 505-836-5663

Detail #

2220

Not To Scale

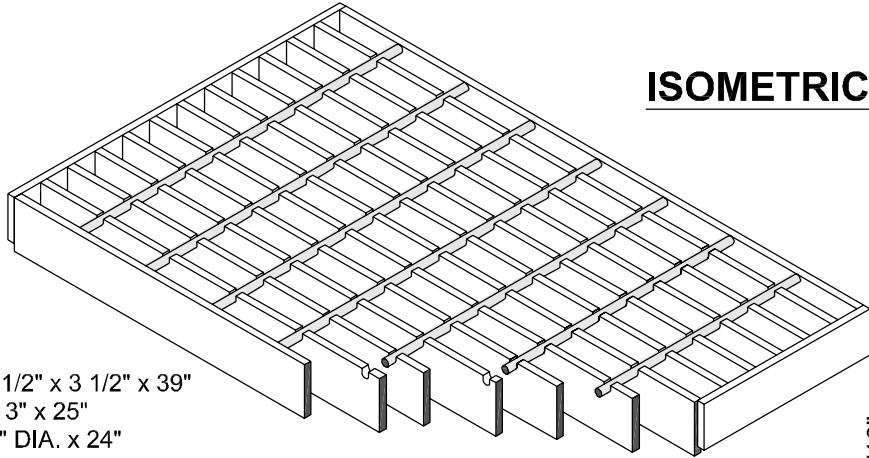
Feb. 2009

## DRAINAGE STORM INLET ALBUQUERQUE GRATE

### GENERAL NOTES:

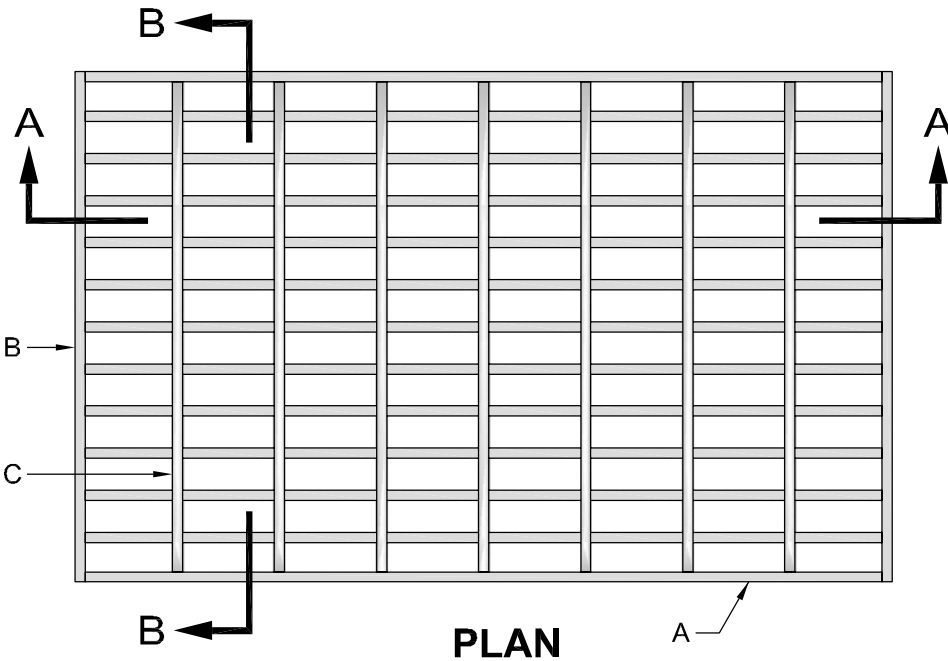
1. All bars to be structural grade steel, grade A36.
2. The grate shall be welded with 1/8" fillet weld around both sides of cross bars. 1/4" fillet weld both sides of bearing bars to end bars.
3. After cleaning surface of scale, rust, oils, etc., paint grate with one shop coat red oxide, two finish coats aluminum paint (AASHTO K 19)
4. Top of cross bars shall be flush with top of grate.
5. Grind welds flush with bearing bars.
6. When installed in frame, push tight to one side, other side shall have 1/2" max. opening. Spacers welded to frame may be used if required to keep 1/2" space or less.

### ISOMETRIC

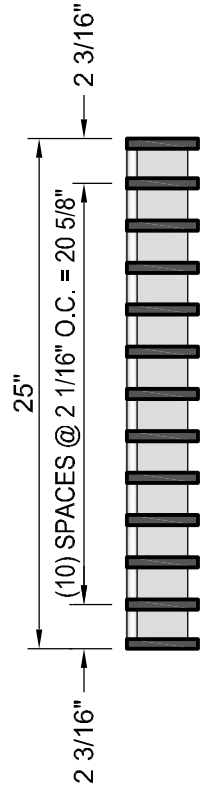


### LEGEND:

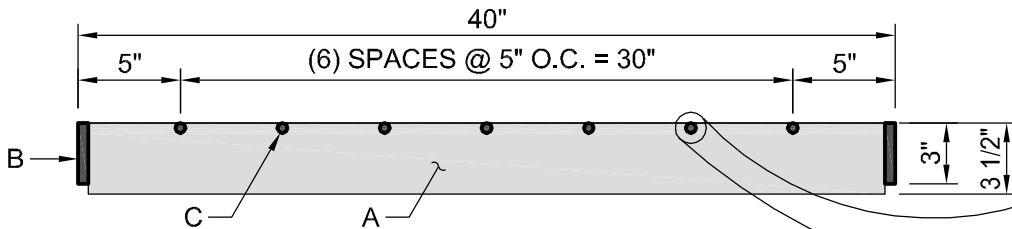
- A. BEARING BARS: (13) 1/2" x 3 1/2" x 39"
- B. END BARS: (2) 1/2" x 3" x 25"
- C. CROSS BARS: (7) 1/2" DIA. x 24"



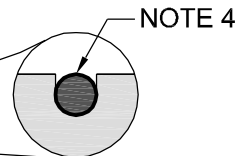
### PLAN



### SECTION B-B



### SECTION A-A



NOTE 4