



ALBUQUERQUE VAULT COMPANY

PRE-CAST
CONCRETE
PRODUCTS

300 Airport Dr., NW * Albuquerque, NM 87121 * Phone: 505-836-4404 / Fax: 505-836-5663

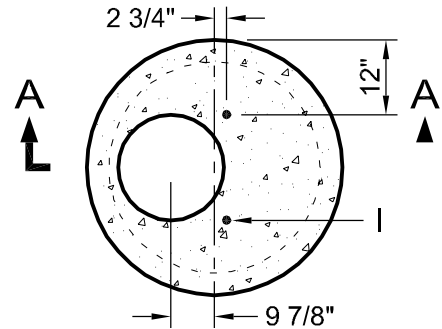
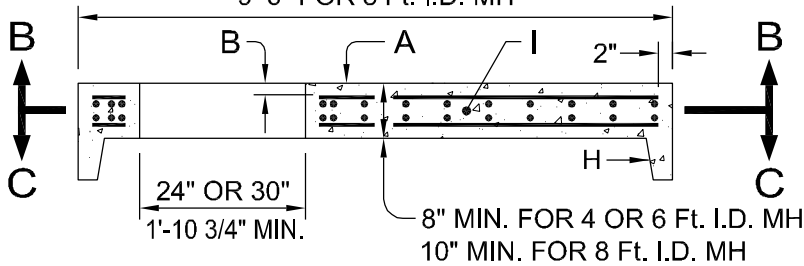
Detail # TYPE-C-CVR

Not To Scale

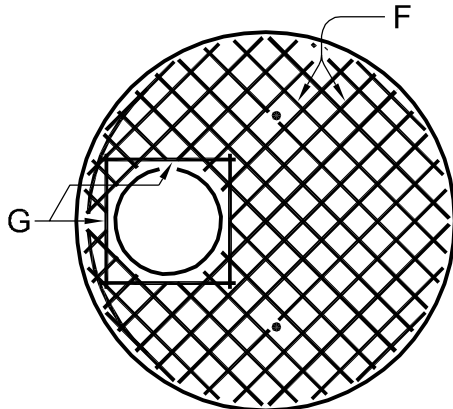
Feb. 2009

TYPE "C" COVER (CITY DWG. 2107)

4'-10" FOR 4 Ft. I.D. MH
7'-2" FOR 6 Ft. I.D. MH
9'-6" FOR 8 Ft. I.D. MH

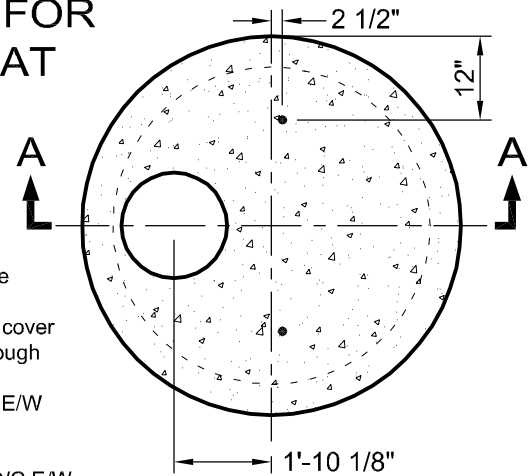


4' I.D. MANHOLE

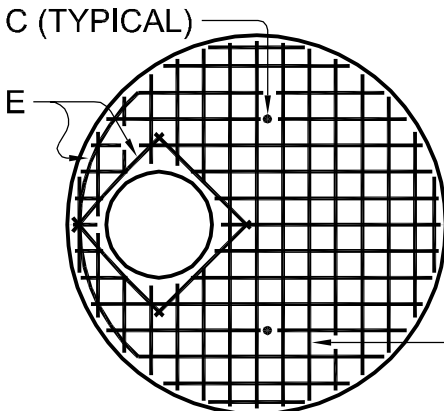


**TOP MAP
SECTION B-B**

REBAR MATS FOR 4', 6', & 8' FLAT TOPS



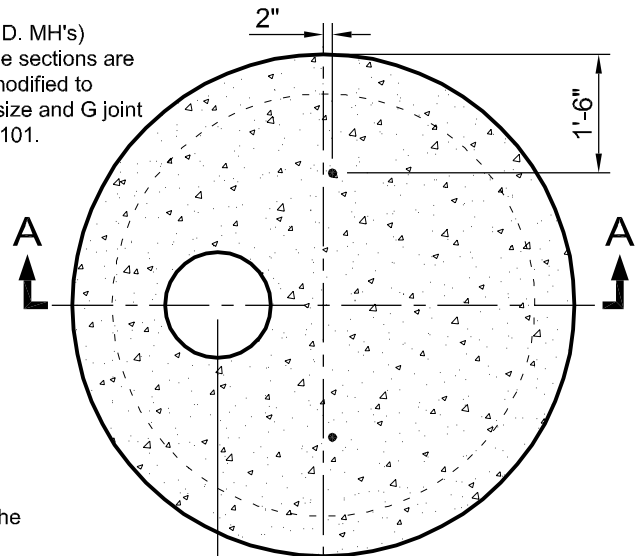
6' I.D. MANHOLE



**BOTTOM MAP
SECTION C-C**

LEGEND:

- A. Precast Reinforced concrete manhole cover.
- B. All bars to have 1 1/2" min. cover
- C. 1" pipe sleeve vertically through cover.
- D. Top Map No. 4 bars 6' O/C E/W (4, 6, & 8 Ft. I.D. MH's)
- E. No. 4 rebars
- F. Bottom Map No. 4 bars 6' O/C E/W (4 & 6 Ft. I.D. MH's)
Bottom Map No. 6 bars 6' O/C E/W (8 Ft. I.D. MH's)
- G. No. 4 bars (4 & 6 Ft. I.D. MH's)
- H. When precast manhole sections are used, cover shall be modified to shape of appropriate size and G joint. Concrete see section 101.
- I.



8' I.D. MANHOLE

GENERAL NOTES:

1. All manholes 20' deep or deeper will require An intermediate landing in the manhole barrel. Type "C" manhole covers shall be used as intermediate landings.
2. Intermediate landings shall be located at the mid point + or - 2 feet of the height of the manhole. At no time shall an intermediate landing or size adjustment top be installed closer than 8' up from the invert of the manhole.